

California Proposition 65 Warning: This product can expose you to chemicals including Chromium (hexavalent compounds), which are known to the State of California to cause cancer and birth defects or other reproductive harm. For more information go to: www.P65Warnings.ca.gov.

COMPONENTS SUPPLIED (Refer to Schematic)

1 - Cart Base	16 - 5/16" Hex Bolts & Lock Washers
2 - Left and Right Side Panels	35 - 1/2" Long (1/4x20) Hex/Phillips Head Screws
3 - Back Panel	4 - Shelf Mounting Brackets
4 - (4) Casters	8 - Shoulder Bolts & Nylock Nuts for Shelves
5 - Left and Right Doors with Handles	
6 - Four Shelf Mounting Brackets	
7 - Two Side Shelves	
8 - Tank Interference Bar	
9 - Tank Holder	
10 - Front Door Support Beam	
11 - Utensil Holders	

You Will Need:

1/2" Wrench (Caster Bolts)
Phillips Head Screwdriver
3/8" Wrench
5/8" Wrench (Shoulder Bolts)
10 mm Wrench (Nylock Nuts for Shoulder Bolts)

GETTING STARTED

Unpack and layout all of the components and compare them to the schematic. Protective film is on most parts. Unless it interferes with the assembly process, leave the film intact during the assembly process for protection and remove when completed. The assembly process should be completed on a protective surface so the chance of scratching is minimized.

To ease assembly, threaded screw inserts have been used throughout so nuts are NOT required to be installed. Do not use power tools to tighten screws as they may damage these inserts. A Phillips screwdriver will ease the threading and tightening of the Dual Head 1/2" Long Screws but we suggest using the correct size wrench for the final tightening.

Step 1. Flip the Cart Base Panel upside down and install the (4) casters with the supplied 5/16" Hex Bolts and Lock Washers. Tighten securely using a 1/2" wrench.

Step 2. Turn Cart Base right side up and install the Back Panel to the Base using (3) supplied 1/2" Long (1/4" x 20") Hex/Phillips Head Screws. Hand tighten only at this point.

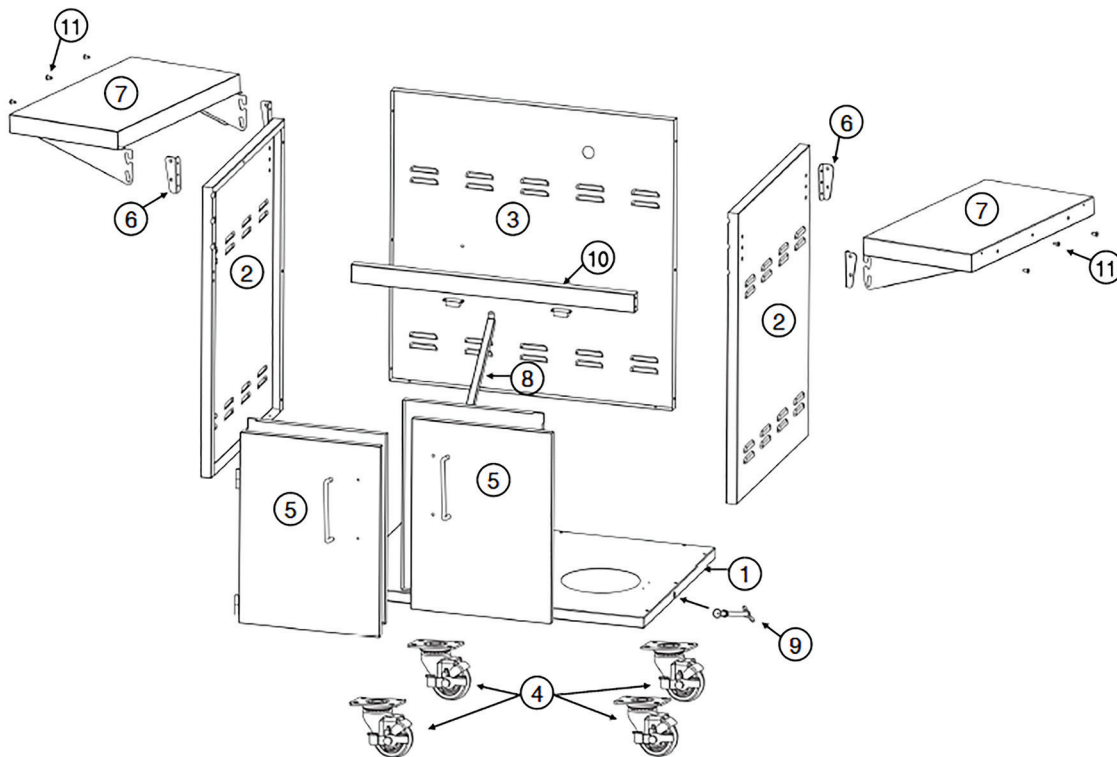
Step 3. Identify the left and right side panels, the (3) notches at the top face forward. Bolt either side to the Cart Base using (3) supplied 1/2" Long (1/4" x 20") Hex/Phillips Head Screws. Then install the (3) screws that fasten the Panel to the Back Panel. Repeat this sequence on the remaining panel.
DO NOT FULLY TIGHTEN yet.

Step 4. Secure the Front Door Support Beam to the Left and Right Panels using (4) supplied 1/2" Long (1/4" x 20") Hex/Phillips Head Screws. Now all the screws that have been installed so far can be firmly tightened. However DO NOT OVER TIGHTEN and possibly damage the threaded inserts.

Step 5. Locate the Tank Interference Bar and install with (2) supplied 1/2" Long (1/4" x 20") Hex/Phillips Head Screws. It mounts to the Base and spans back to the Back Panel. The Back Panel Screw Fastener comes from the outside, into the threaded insert on the Interference Bar.

DRAGON FIRE CART ASSEMBLY INSTRUCTIONS

- Step 6.** Locate the (4) Shelf Mounting Brackets and install each with (3) supplied 1/2" Long (1/4" x 20") Hex/Phillips Head Screws. TIGHTEN SECURELY. Shelves will be mounted later.
-
- Step 7.** The Left and Right Doors and can now be simply dropped on to the Hinges that are welded in place. The magnets for the Doors have been preset but if adjustment is necessary to make the doors flush or even, the screws securing the magnets can be loosened and adjusted.
-
- Step 8.** The Grill Head gets slipped into the finished cart and fastened with (2) 1/2" Long (1/4" x 20") Hex Head Screws. Always use a second person when lifting the grill. Removing the Cooking Grids, Burners and Heat Plates first will reduce the weight. The Grill slides back into the cart until the holes in the Grill's body on the left and right side are aligned with the threaded inserts. Then the 1/2" Long (1/4" x 20") Thread Hex/Phillips Head Screws are installed and tightened.
-
- Step 9.** Mount each side shelf with the supplied (4) Shoulder Bolts and Nylock Nuts. Tighten. Shelves can be folded up and down. Lastly install the (3) supplied utensil holders on each shelf.
-
- Step 10.** Thread the supplied tank holder into the threaded insert on the right side of the Cart Base. Tighten against the L.P. Tank after the Tank is installed.
-



**For customer service please contact your authorized dealer immediately.
If you need additional information and/or assistance, please contact ProFire Grills:**



ProFire Grills

5565 North 124th Street • Butler, WI 53007

Toll Free: 1-888-781-4657 • Fax: 1-888-781-4657